

Cheat Sheet



MedekRPM
Full-Service Remote Patient Monitoring

WHAT ARE CPT® CODES?

The **Current Procedural Terminology (CPT®)** codes offer doctors and health care professionals a uniform language for coding medical services and procedures to streamline reporting, increase accuracy and efficiency.

Remote Patient Monitoring (RPM) offers Physicians the ability to provide a better quality of care within the practice. RPM Devices such as Blood pressure cuffs, Glucose Monitors, Pulse Oximeters, as well as scales help to diagnose and treat Chronic health conditions. As soon as a reading is taken by such a device, it is automatically transmitted to a portal for the physician to review and act on. This will allow the Physician to get a better scope of the patients well being and put together a more thorough care plan.

CPT® CODE 99453

Remote monitoring of physiologic parameter(s) (eg, weight, blood pressure, pulse oximetry, respiratory flow rate), initial; set-up and patient education on use of equipment.

Initial set-up and patient education on the device.

This code can only be billed once per patient per care plan.



CPT® CODE 99454

Remote monitoring of physiologic parameter(s) (eg, weight, blood pressure, pulse oximetry, respiratory flow rate), initial; device(s) supply with daily recording(s) or programmed alert(s) transmission, each 30 days

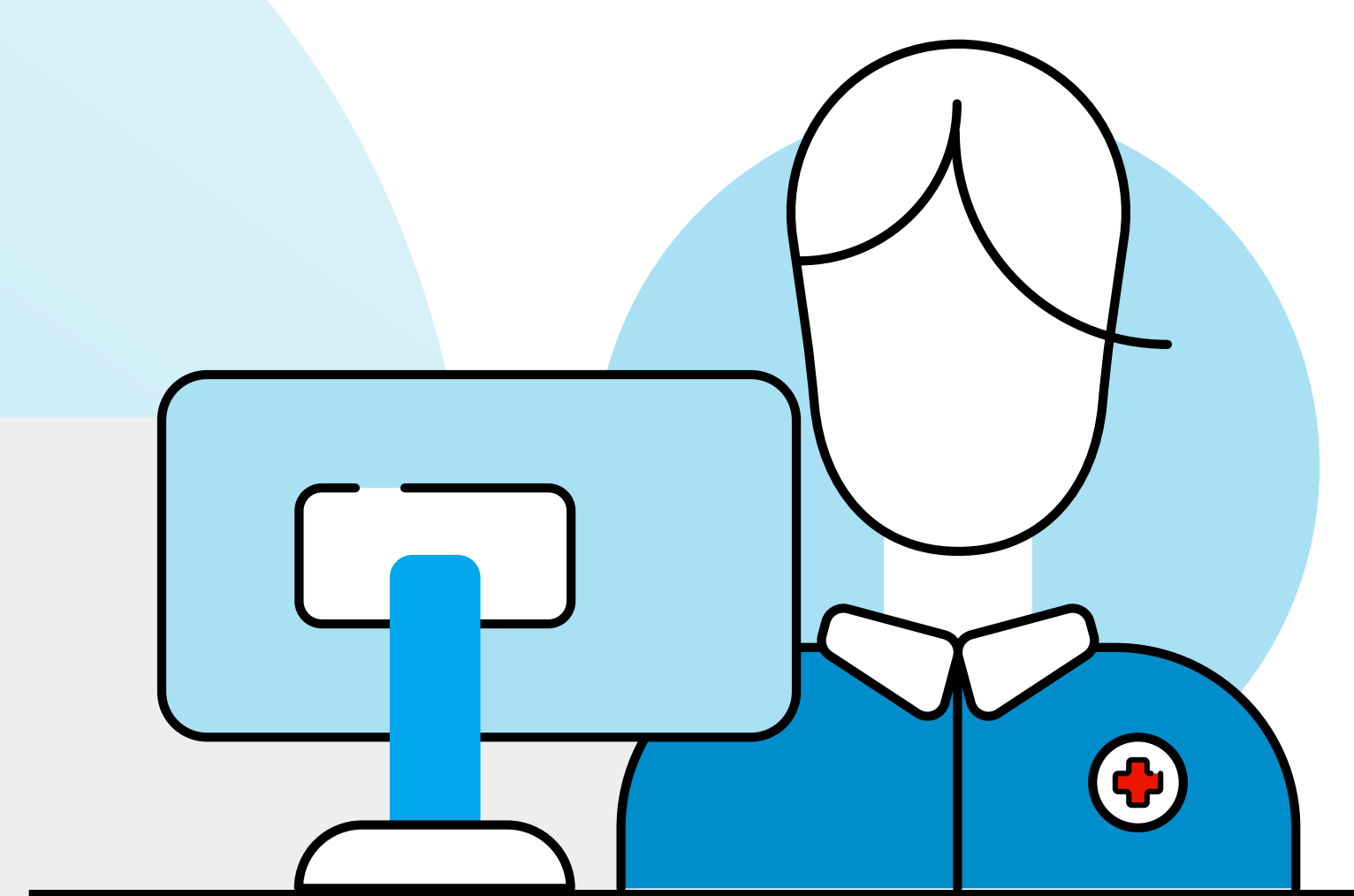
This includes the supply and use of the medical devices used to monitor and collect patient-generated health data (PGHD) remotely. This specifically means data transmission and does not include time spent educating and setting up the use of the device.

99454 must be billed in conjunction with 99453 and requires the transmission of data from a remote device for a minimum of 16 days within a 30-day period. However, there is an exception for Covid-19 patients during the ongoing public health emergency (PHE), in which only 2 days of monitoring are required.

CPT® CODE 99457

Remote physiologic monitoring treatment management services, 20 minutes or more of clinical staff/physician/other qualified healthcare professional time in a calendar month requiring interactive communication with the patient/caregiver during the month

Care Management by Clinical Staff: After analyzing and interpreting remotely collected physiologic data, the data is used to develop a treatment plan and then manage the plan until the targeted goals of the treatment plan are attained. CPT® codes 99457 & 99458 are designated as care management services and, as such, can be provided by clinical staff under the general supervision of the physician or NPP.



CPT® CODE 99458

CPT® Code 99458 covers the additional time needed to care for patients properly. To be able to bill for this code, CPT® Code 99457 must be completed. This code ensures patients treated with chronic conditions can receive extra care from their team of care professionals to reach their health goals. Procedures will be the same as CPT® Code 99457. It can be billed up to 2 more times in a calendar month for a total of 40 minutes.

CPT copyright 2022 American Medical Association. All rights reserved.

Learn More

WANT TO INCREASE YOUR REVENUE PER PATIENT?

Let's discuss how your practice can experience exponential growth with our proven and tested RPM Program.

Get Your Customized Report

